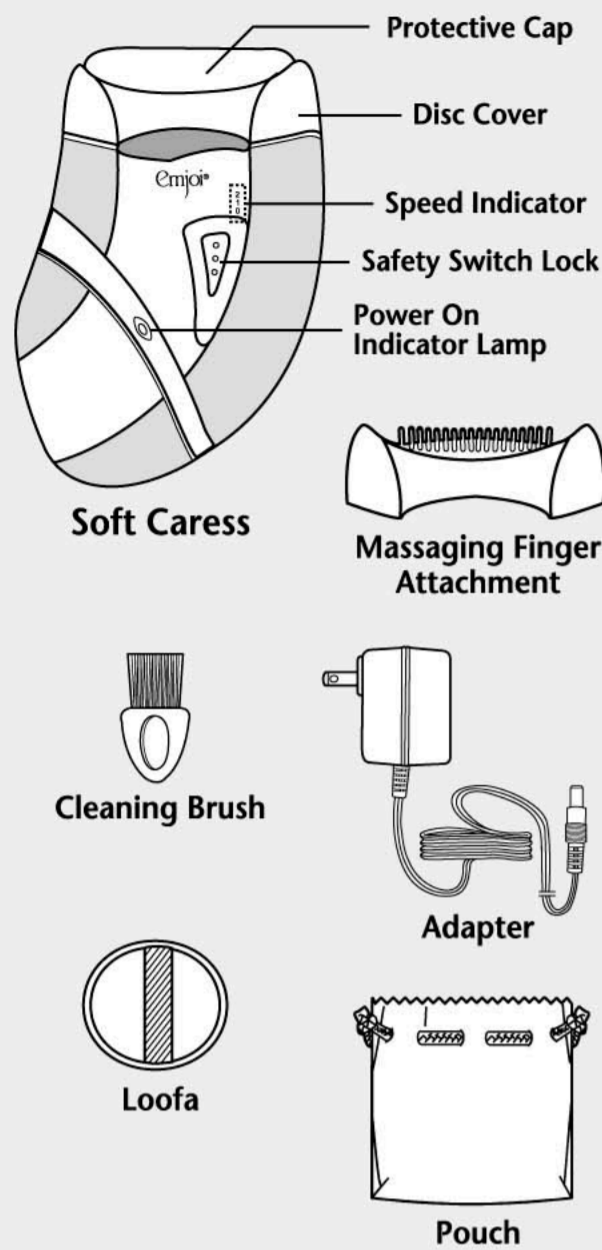


Parts Description/Accessories Name

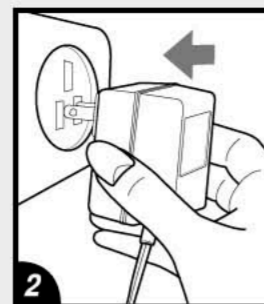


Instructions for use

For ultimate results take a warm bath or shower and use the loofa, enclosed, in small circles to remove dead skin and open pores. Doing this before you use your **Emjoi® Soft Caress** will help to make the hair removal process more comfortable.



1 Insert plug into base of unit.



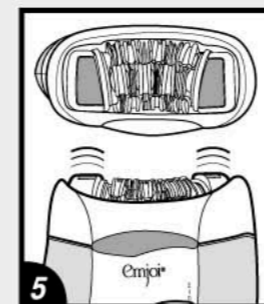
2 Place the adapter into socket.



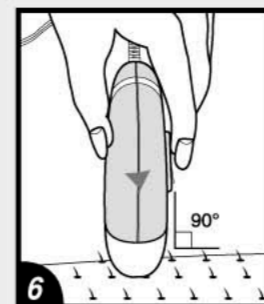
3 Remove the plastic protective cover.



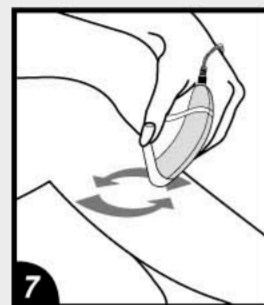
To turn on the unit, press the safety switch lock and at the same time slide it up to the desired speed.
The unit has 2 speeds:
0 Power "OFF"
1 Low speed for fine hair
2 High speed for coarse hair



5 The vibrating agents on the side help to eliminate discomfort.



6 Hold the unit in your palm, at a 90° angle, so the Emjoi® logo is facing you. Do not apply pressure; just glide the unit over the surface of the skin.



7 Use short, quick, brush like or sweeping motions in the direction of hair growth.



8 Make sure to hold the skin surrounding the area you are removing hair from taut, taking special care to extend the leg before removing hair from behind the knee.



9 May be used for the bikini area (hold the skin taut with one hand).



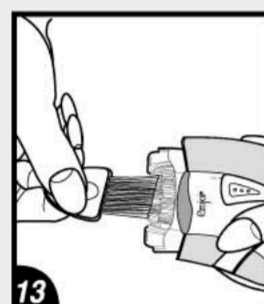
10 Can be used to remove individual hair from the upper lip and chin area.



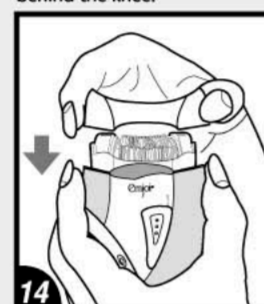
11 May be used to remove hair from underarms (extend your arm so skin is stretched taut).



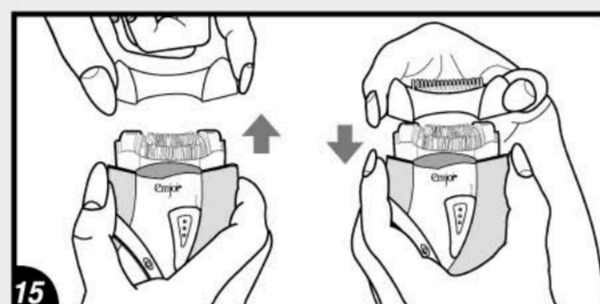
12 To Clean: Turn the unit off. Remove the disc cover of the unit by squeezing both sides of the disc cover and pulling up.



13 Gently brush the tweezers to remove any hair.



14 Replace the disc cover.



15 To use the Massaging Finger Attachment remove the disc cover and place the Massaging Finger Attachment onto the unit to make the hair removal session extremely comfortable.

Warranty

The **Emjoi® Soft Caress** warranty against defects in material and workmanship lasts one year from the date of purchase.

Keep original receipt for warranty service.

During this warranty period, return the product to Emjoi, Inc. with proof of purchase to FDR Station, PO Box 7406, New York, NY 10150. Emjoi will take care of repair, or at their discretion, replacement of a defective unit without charge. For questions regarding this policy you may call toll free 1-888-99-EMJOI (1-888-993-6564).

Important: This warranty does not cover damages resulting from accidents, misuse, alterations, abuse, lack of reasonable care, or performance of services or repairs by an unauthorized service center. The manufacturers and distributors of the **Emjoi® Soft Caress** do not assume responsibility for any damage caused by misuse or use other than that described in these instructions.

Model No. AP-10
US Patent No. 6,123,713
China Patent No. ZL99816994.3
Other Patents Pending
© Soft Lines International Ltd. 2007

www.emjoi.com

PK-IB-EMJ-10-01-0

Emjoi® *Soft Caress*

Electrically-operated



Emjoi® *Soft Caress*

Before using your **Emjoi® Soft Caress**, please read all these instructions carefully and completely.

The **Emjoi® Soft Caress** is designed with 36 gold-plated tweezers to quickly and effectively remove hair from the root for weeks of smooth skin. It has pain reduction technology, designed to greatly reduce the discomfort that may be associated with when removing unwanted body hair. The **Emjoi® Soft Caress** is designed to fit the contours of your body and remove hair as short as 0.5mm from the upper lip, chin, legs, bikini line and underarms.

When using an epilator for the first time we suggest that you test the unit on an area that has light hair growth in order to get accustomed to the epilation process.

Caution

Do not store or use your **Emjoi® Soft Caress** where it can fall into a tub or sink of water. Do not reach for your unit if it has fallen into water, immediately unplug it.

Caution

Before plugging into an electrical outlet, make sure that the adapter is appropriate for the local voltage. This is extremely important when traveling overseas.



Instructions for use:

For best results: Take a warm bath or shower, to open up your pores, and use the loofa sponge, enclosed, in small circles to exfoliate and remove dead skin from the area you wish to remove hair. You can use the loofa with any bath/shower gel or bar soap. Doing this before you use your **Emjoi® Soft Caress** will cleanse and make your skin pliable, so removing hair will be less uncomfortable.

1. Use your **Emjoi® Soft Caress** in a location that has a comfortable temperature to avoid perspiration.
2. Make sure that the areas you wish to remove hair from are clean, dry and free from moisturizing cream or oil.
3. Insert the adapter plug into the bottom of the unit.
4. Plug your adapter into an electrical outlet.
5. Remove the protective cap, by gently pulling, from your **Emjoi® Soft Caress**.
6. To turn on your unit, press the safety switch lock and at the same time slide it up to the desired speed. Low is recommended for fine hair and high is recommended for coarse hair.
0 Power "OFF"
1 Low speed
2 High speed
7. Hold the unit in your palm, at a 90° angle, so the Emjoi® logo is facing you.
8. Position your **Emjoi® Soft Caress** so that the gold discs are upright, the Emjoi® logo should be facing you.
9. To minimize discomfort, hold the skin taut surrounding the area you are removing hair from.
10. Gently glide the **Emjoi® Soft Caress** in short, quick, brush like or sweeping strokes in the direction of hair growth.

Note: For your protection, your **Emjoi® Soft Caress** may slow down, or stop operating completely if it is pressed too hard against the skin.

11. Before removing hair from the bikini line and underarms it is important to use the loofa sponge in a warm shower or bath to remove dead skin and prevent ingrown hairs. If it has been an extended amount of time since you have removed hair from your bikini line and underarms, trim the hair with a scissor or trimmer. Make sure to hold your skin taut with one hand while removing hair.
12. The **Emjoi® Soft Caress** is only intended to remove single hairs from the upper lip and chin. Hold area taut and use a small brushing motion. **Do not use like an electric shaver on your entire face!**
13. Repeat within each area until all unwanted hair is removed. The time required to remove unwanted hair depends on the user's hair type.
14. We recommend that you clean the **Emjoi® Soft Caress** after each use, see Cleaning.
15. Keep the protective cap on your unit when it is not in use.

Cleaning:

Regular cleaning and good maintenance ensures optimum results and will extend the lifetime of your **Emjoi® Soft Caress**.

1. Before cleaning, make sure to turn off your unit and unplug it from the electrical outlet.
2. Remove the disc cover by squeezing both sides of the disc cover and pulling up.
3. Using the brush, enclosed, remove hair on all sides of the discs.
4. Replace the disc cover by gently pressing until it clicks into place.
5. Put the protective cap on to safeguard the tweezers.

Remove Residue:

To remove residue from the gold plated tweezers use rubbing alcohol on the tip of the tweezers with a cotton swab that has been squeezed dry. **Note:** Make sure that the cotton swab is not soaked with alcohol.

Massaging Finger Attachment

1. Remove disc cover of the unit.
2. Place Massaging Finger Attachment onto the unit.
3. When you are finished removing hair remove the Massaging Finger Attachment.
4. Clean the unit and replace the disc cover and protective cap.

WARNING/IMPORTANT:

- Before using your hair remover please read all these instructions carefully and completely.
- Use the **Emjoi® Soft Caress** only for purposes described in this instruction book.
- Please keep these instructions for future reference.
- This unit is intended for one person. We discourage sharing the unit with others.
- **Warning** - To reduce the risk of burns, fires or electric shock, never leave your **Emjoi® Soft Caress** unattended when plugged in.
- Household use only.
- Do not use an extension cord with this unit.
- Keep the appliance dry.
- This unit is for dry use only.
- Do not place or store the unit in direct sunlight. Please store your unit in a cool dry place at a temperature between 0 - 40°C.
- Do not store your unit where it can fall into a tub or sink of water.
- **Warning** - Do not use your **Emjoi® Soft Caress** while bathing or in the shower. Your **Emjoi® Soft Caress** is not waterproof or water resistant and is not intended to be used near water, in the bathtub or in the shower.
- Do not place your unit in water or drop water into your unit.
- Do not reach for your unit if it has fallen into water. Immediately unplug the unit.
- Place the adapter into the unit and then into the electrical outlet. Make sure that the plug is inserted firmly into the appliance. When you are finished using your unit turn the unit "OFF" and then remove the adapter from the electrical outlet and then from the unit.
- When you unplug your unit please pull on the plug and not on the cord.

- Always unplug your unit when it is not in use and before cleaning it.
- Do not wrap the cord of your adapter around the unit.
- Keep the cord of the adapter away from hot surfaces.
- Never use your unit if the adapter cord or electrical outlet is damaged.
- Do not cut off the adapter to use it with another plug as this can be a hazardous situation.
- Only use your **Emjoi® Soft Caress** with the adapter supplied with the unit. For questions regarding your adapter in the US contact 1-888-99EMJOI, M-F, 9-5 EST.
- **Caution:** Before plugging into an electrical outlet, make sure that the adapter is appropriate for the local voltage. This is extremely important when traveling overseas.
- Do not use this unit if the epilation head is damaged as this could lead to injury.
- Never use your unit if it has been damaged or dropped into water.
- Do not use your unit if it has been damaged or broken tweezers discs as injury may occur.
- Do not drop or insert anything into any openings of the unit.
- Do not use your unit where aerosol products or oxygen is being used.
- Keep your unit out of reach of children.
- This appliance is not to be used on, by or near children or invalids.
- Only use this unit on clean, dry, lotion free skin.
- Do not use water or any other liquid on the tweezers other than rubbing alcohol.
- **To prevent accidents and injury to you or damage to the unit** - when your **Emjoi® Soft Caress** is in use, keep it away from the hair on your scalp, your eyebrows, eyelashes as well as clothes, brushes, wires, cords, shoelaces etc.
- Do not use the **Emjoi® Soft Caress** if you have - allergic or sensitive skin that reacts to cosmetics, metals, clothing, etc., acne, body acne, warts, around moles and loose skin, diabetes, Raynaud's disease, eczema, psoriasis, hemophilia, immune deficiency, rosacea, couperose, varicose veins, wounds or when your skin has rashes or is sunburned, inflamed or irritated. Consult with your health care provider prior to use if you have any of the above conditions.
- Do not use the unit before or during menstruation, during pregnancy or for one month after giving birth unless you consult with your health care provider prior to use.
- Changes in your hormone levels (taking hormone medication, recently pregnant) can influence the color or thickness of hair growth. These changes are not caused by this product but hormonal changes.
- If you have any medical conditions, issues, questions or any sensitivity whatsoever we strongly advise you to consult with your health care provider before using this product.
- If you have a pacemaker consult with your health care provider prior to use.
- If you are epilating for the first time, we recommend doing it in the evening so any possible redness or irritation can go away overnight. We suggest testing the unit gradually over a period of two to three days to allow your skin to adjust.
- If you have never epilated before (or if it has been an extended time

- since you epilated) you will feel a prickling sensation when using the unit. This feeling is due to the fact that you are removing hair from the root. After a few sessions the sensation you feel should diminish.
- Removing hair from the root can cause ingrown hair and skin irritation (redness of the skin, discomfort, itching). If you know that you are prone to ingrown hair, removing hair from the root may not be for you. Regular skin massaging with a massaging glove or loofa, may help reduce the chance or occurrence of ingrown hairs. After using the epilator you can use body cream or aloe vera to soothe the skin and any possible irritation.
- Using an epilator may cause redness or irritation of the skin. This is a normal reaction that will quickly disappear, but may be longer if you have very sensitive skin or are removing hair from the root for the first few times. If any irritation remains for more than 3 days, discontinue use and consult with your health care provider.
- Sometimes inflammation of the skin can occur when bacteria penetrates the skin. Cleaning the epilation head before and after each use can minimize the risk of infection.
- The **Emjoi® Soft Caress** is only intended to remove single hairs from the upper lip and chin. Hold area taut and use a small brushing motion. **The Emjoi® Soft Caress is NOT an electric shaver and should NOT be used like an electric shaver on your entire face!** Using the **Emjoi® Soft Caress** like an electric shaver, without holding the skin taut, could potentially allow the **Emjoi® Soft Caress** to pinch or grab the skin, which could cause irritation and skin damage.
- Before removing hair from the bikini line and underarms it is important to use a loofa sponge or exfoliation cream in a warm shower or bath to remove dead skin and help minimize the chance or occurrence of ingrown hairs. If it has been an extended amount of time since you have removed hair from your bikini line and underarms (if the hair is longer than 5mm), trim the hair with a scissor or trimmer. Make sure to hold your skin taut with one hand while removing hair. Some women may experience irritation after removing hair from the underarms and bikini line for the first time. We suggest testing the unit on a small part of the skin in these areas first.
- Do not continually rub the unit on the same area or apply strong pressure.
- Keep the protective cap on your unit when it is not in use.

Frequently asked questions:

- Q: Does the **Emjoi® Soft Caress** hurt?
A: The first time you use the **Emjoi® Soft Caress** you might feel a prickling sensation, this feeling is due to the fact that you are removing hair from the root. After several uses, the tweezing becomes more comfortable even for those with sensitive skin.
- Q: How should I hold the **Emjoi® Soft Caress**?
A: To minimize discomfort, hold the skin surrounding the area you are removing hair from taut. Gently glide, do not apply pressure, the **Emjoi® Soft Caress** in short, quick, brush like or sweeping strokes in the direction of hair growth.
- Note:** For your protection, your **Emjoi® Soft Caress** may slow down, or stop operating completely if it is pressed too hard against the skin.
- Q: Can I use the **Emjoi® Soft Caress** on my upper lip?
A: Yes. The **Emjoi® Soft Caress** is perfect for removing individual hairs from the upper lip.

Important: Hold your upper lip taut and use short brushing strokes

to remove individual hairs from your upper lip.

- Q: Can I use the **Emjoi® Soft Caress** anywhere on my face?
A: No. The **Emjoi® Soft Caress** is only intended to remove individual hairs from the upper lip and chin area. When removing hair from your upper lip and chin, hold your skin taut and use short brushing motions. Do not use **Emjoi® Soft Caress** like you would for an electric shaver.
- Q: Can I use the **Emjoi® Soft Caress** on my bikini line and underarm?
A: Yes. Before removing hair from the bikini line or underarms it is important to use the loofa sponge, enclosed, in a warm shower or bath to remove dead skin and minimize the chance or occurrence of ingrown hair.
- Q: Will my hair grow back as fast as it does when I shave?
A: No. With shaving you are cutting the hair at the surface, so hair grows back quickly. When you use the **Emjoi® Soft Caress** it removes hair from the root so it takes longer, up to 4-6 weeks, to grow back.
- Q: What if my skin becomes red after using the **Emjoi® Soft Caress**?
A: Whenever you remove hair from the root your skin may become red or irritated. To soothe irritation you can use lotion with aloe vera or an antibiotic ointment.
- Q: What can I do for ingrown hairs?
A: We recommend using a loofa sponge, enclosed, or an exfoliation cream in the shower or bath to soften the skin and any ingrown hairs, enabling the **Emjoi® Soft Caress** to remove the hair from the root.
- Q: I have varicose veins, can I use the **Emjoi® Soft Caress**?
A: No. For sanitary reasons, the **Emjoi® Soft Caress** is only recommended to be used by one person.
- Q: How can I remove residue from the tweezers?
A: To remove residue from the gold plated tweezers use rubbing alcohol on the tip of the tweezers with a cotton swab that has been squeezed dry. **Note:** Make sure that the cotton swab is not soaked with alcohol.
- Q: I have a pacemaker, can I use the **Emjoi® Soft Caress**?
A: Regarding any medical issues or question, we strongly advise you to consult with your health care provider prior to use.