

**WARNING / IMPORTANT**

- Before using your hair remover please read all these instructions carefully and completely.
- Use the **Emjoi® Epi Slim** only for purposes described in this instruction book.
- Please keep these instructions for future reference.
- This appliance is not intended for use by persons (including children) with reduced physical, sensory or mental capabilities, or lack of experience and knowledge, unless they have been given supervision or instruction concerning use of the appliance by a person responsible for their safety.
- This unit is intended for one person. We discourage sharing the unit with others.
- Household use only.
- Keep the appliance dry.
- This unit is for dry use only.
- Do not place or store the unit in direct sunlight. Please store your unit in a cool dry place at a temperature between 0°C and 40°C.
- Do not store your unit where it can fall into a tub or sink of water.
- **Warning - Do not use your Emjoi® Epi Slim while bathing or in the shower.** Your **Emjoi® Epi Slim** is not waterproof or water resistant and is not intended to be used near water, in the bathtub or in the shower.
- Do not place your unit in water or drop water into your unit.
- Do not reach for your unit if it has fallen into water.
- Always turn your unit "OFF" when it is not in use and before cleaning it.
- Do not use this unit if the epilator head is damaged as this could lead to injury.

- Never use your unit if it has been damaged or dropped into water.
- Do not use your unit if it has damaged or broken tweezer discs as injury may occur.
- Do not drop or insert anything into any openings of the unit.
- Do not use your unit outdoors.
- Do not use your unit where aerosol products or oxygen is being used.
- Do not use your unit where aerosol products or oxygen is being used.
- Children should be supervised to ensure that they do not play with this appliance.
- Keep your unit out of reach of children.
- This appliance is not to be used on, by or near children or invalids.
- Only use this unit on clean, dry, lotion free skin.
- Do not use water or any other liquid on the tweezers other than rubbing alcohol.
- To prevent accidents and injury to you or damage to the unit - when your **Emjoi® Epi Slim** is in use, keep it away from the hair on your scalp, your eyebrows, eyelashes as well as clothes, brushes, wires, cords, shoelaces, etc.
- Do not use the **Emjoi® Epi Slim** if you have - allergic or sensitive skin that reacts to cosmetics, metals, clothing, etc., acne, body acne, warts, around moles and loose skin, diabetes, Raynaud's disease, eczema, psoriasis, hemophilia, immune deficiency, rosacea, couperose, varicose veins, wounds or when your skin has rashes or is sunburned, inflamed or irritated. Consult with your health care provider prior to use if you have any of the above conditions.

- Do not use the unit before or during menstruation, during pregnancy or for one month after giving birth unless you consult with your health care provider prior to use.
- Changes in your hormone levels (taking hormone medication, recently pregnant) can influence the color or thickness of hair growth. These changes are not caused by this product but hormonal changes.
- If you have any medical conditions, issues, questions or any sensitivity whatsoever we strongly advise you to consult with your health care provider before using this product.
- If you have a pacemaker consult with your health care provider prior to use.
- If you are epilating for the first time, we recommend doing it in the evening so any possible redness or irritation can go away overnight. We suggest testing the unit gradually over a period of two to three days to allow your skin to adjust.
- If you have never epilated before (or if it has been an extended time since you epilated) you will feel a prickling sensation when using the unit. This feeling is due to the fact that you are removing hair from the root. After a few sessions the sensation you feel should diminish.
- Removing hair from the root can cause ingrown hair and skin irritation (redness of the skin, discomfort, itching). If you know that you are prone to ingrown hair, removing hair from the root may not be for you. Regular skin massaging with a massaging glove or loofa, may help reduce the chance or occurrence of ingrown hairs. After using the epilator you can use body cream or aloe vera to sooth the skin and any possible irritation.

- Using an epilator may cause redness or irritation of the skin. This is a normal reaction that will quickly disappear, but may be longer if you have very sensitive skin or are removing hair from the root for the first few times. If any irritation remains for more than 3 days, discontinue use and consult with your health care provider.
- Sometimes inflammation of the skin can occur when bacteria penetrates the skin. Cleaning the epilator head before and after each use can minimize the risk of infection.
- The **Emjoi® Epi Slim** is only intended to remove single hairs from the upper lip and chin. Hold area taut and use a small brushing motion. The **Emjoi® Epi Slim** is **NOT an electric shaver and should NOT be used like an electric shaver on your entire face!** Using the **Emjoi® Epi Slim** like an electric shaver, without holding the skin taut, could potentially allow the **Emjoi® Epi Slim** to pinch or grab the skin, which could cause irritation and skin damage.
- Before removing hair from the bikini line and underarms it is important to use a loofa sponge or exfoliation cream in a warm shower or bath to remove dead skin and help minimize the chance or occurrence of ingrown hairs. If it has been an extended amount of time since you have removed hair from your bikini line or underarms (if the hair is longer than 5 mm), trim the hair with a scissor or trimmer. Make sure to hold the skin taut with one hand while removing hair. Some women may experience irritation after removing hair from the underarms and bikini line for the first time. We suggest testing the unit on a small part of the skin in these areas first.

- Do not continually rub the unit on the same area or apply strong pressure.
- Keep the protective cap on your unit when it is not in use.

**WARRANTY**

The **Emjoi® Epi Slim** warranty against defects in materials and workmanship lasts one year from the date of purchase.

**Keep original receipt for warranty service.**

During this warranty period, return the product to Emjoi, Inc. with proof of purchase to FDR Station, PO Box 7406, New York, NY 10150. Emjoi will take care of repair, or at their discretion, replacement of a defective unit without charge. For questions regarding this policy you may call toll free 1-888-99-EMJOI (1-888-993-6564).

**IMPORTANT:** This warranty does not cover damages resulting from accidents, misuse, alterations, abuse, lack of reasonable care, or performance of services or repairs by an unauthorized service center. The manufacturers and distributors of the **Emjoi® Epi Slim** do not assume responsibility for any damage caused by misuse or use other than that described in these instructions.

[www.emjoi.com](http://www.emjoi.com)

Model No. AP-9L / AP-9LC  
US Patent No.  
5,281,233  
D499,842S  
Others patents pending  
© Soft Lines International Ltd. 2010

PK-IB-EMJ-9L-04-6

Emjoi®  
**Epi Slim**

A cosmetic hair remover for delicate areas and touch-ups

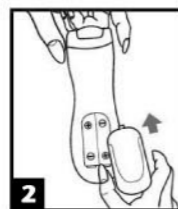
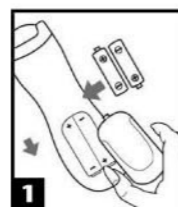


Emjoi®  
Technology That Gets Personal

**Battery Installation:**

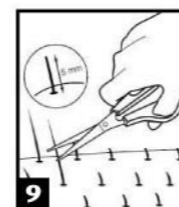
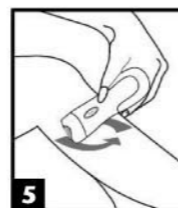
To operate your **Emjoi® Epi Slim** for the first time, open the battery cover (fig. 1) and insert 2 AA alkaline batteries (1.5V LR6) as indicated inside the battery compartment. With the batteries properly in position, replace the battery cover (fig. 2).

**Note:** Before using your **Emjoi® Epi Slim** for the first time, familiarize yourself with how the unit feels when removing hair from the root. We suggest that you try the unit on the back of your hand. The slight sensation you feel will diminish over time and you will be hair free for up to 4-6 weeks.



**Instructions For Use:**

- Remove the protective cover from the epilator head before use (fig. 3).
- When removing hair from the root it is important to hold the skin **very taut** to avoid pinching and help minimize discomfort.
- Turn the unit to the "ON" position (fig. 4). Hold the **Emjoi® Epi Slim** at a 90° angle to the area you are removing hair from with the **Emjoi® Epi Slim** logo facing you. Push the button UP ↑ - Power "ON" Push the button DOWN ↓ - Power "OFF"
- Move the **Emjoi® Epi Slim** in rapid circles, lightly gliding over the skin's surface (fig. 5). Do not apply pressure.
- For touch-ups at the back of the knee, straighten your leg so that the skin is stretched taut and hold the **Emjoi® Epi Slim** as before, at a right angle to the area being treated.
- We recommend that you clean your **Emjoi® Epi Slim** after each use, see Cleaning Your **Emjoi® Epi Slim**.



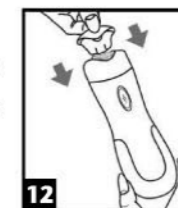
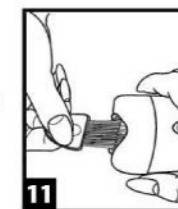
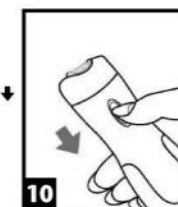
This unit may be used to remove individual facial hair, on the upper lip (fig. 6), chin and cheek area. If you want to use **Emjoi® Epi Slim** for touch up hair removal on the bikini line (fig. 7), underarms (fig. 8) and legs trim hair that is longer than 5mm (fig. 9).

**Facial Tips:** Take extra care when using the **Emjoi® Epi Slim** on the upper lip. Hold the skin **very taut** by gently pulling down on the area with your fingers. The **Emjoi® Epi Slim** has been designed for use on the upper lip, chin and cheek areas. **Do not use this unit on or near the eyebrows, forehead or hair line.**



**Cleaning Your Emjoi® Epi Slim:**

- Make sure the **Emjoi® Epi Slim** is turned "OFF" (fig. 10). Push the button DOWN ↓ - Power "OFF".
- Remove the protective cap.
- Use the brush provided to remove any hair that has accumulated between the discs. (fig. 11).
- Replace the protective cap (fig. 12).
- **To Remove Residue:** To remove residue from the tweezers, use rubbing alcohol on the tip of the tweezers with a cotton swab that has been squeezed dry. Note: Make sure that the cotton swab is not soaked with rubbing alcohol.



**Helpful Tips On Using Your Emjoi® Epilator**

- Position your **Emjoi®** epilator vertically against your skin at a 90° angle.
- Hold your skin taut and keep your unit upright when epilating.
- Gently glide your **Emjoi®** epilator in short, circular and round motions to increase comfort and the effectiveness of the unit.

