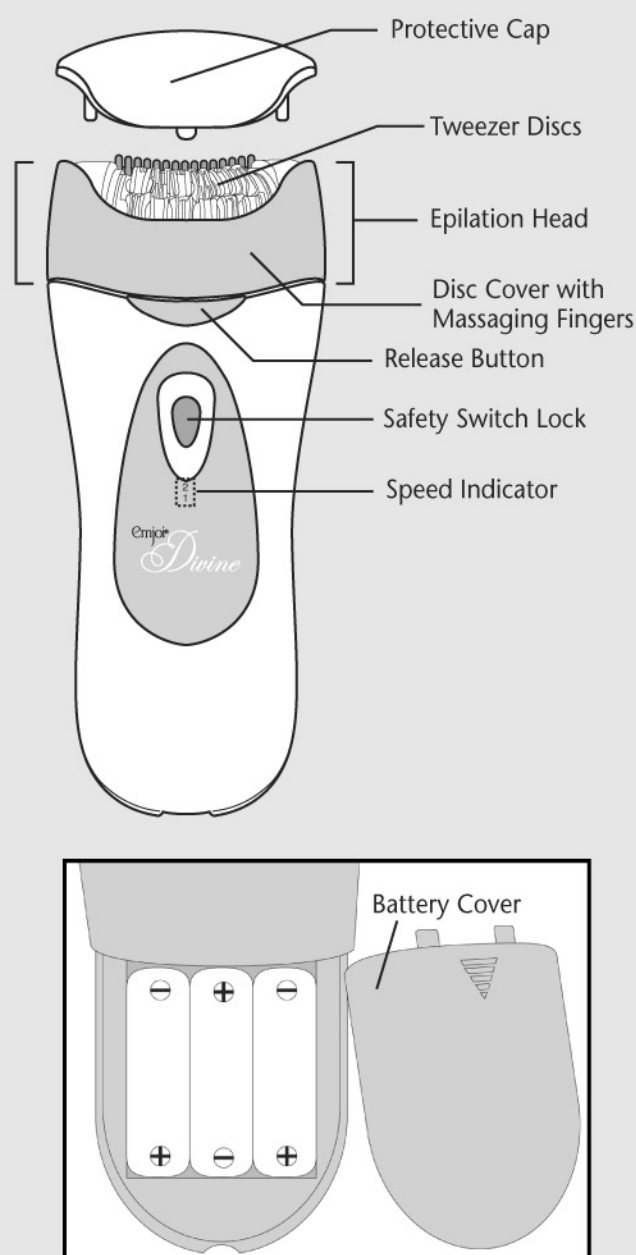
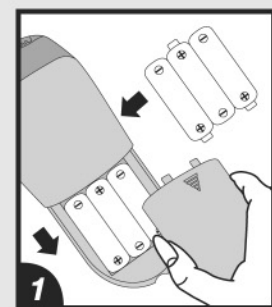


**Parts Description**



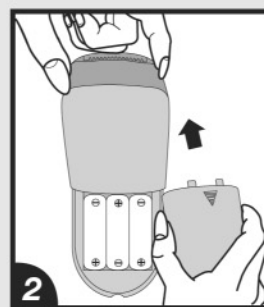
**Instructions for use**

For ultimate results take a warm bath or shower and use a loofa or exfoliation cream, in small circles to remove dead skin and open pores. Doing this before you use your **Emjoi® Divine** will help to make the hair removal process more comfortable.

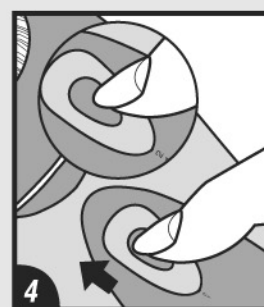


**Battery Installation:**

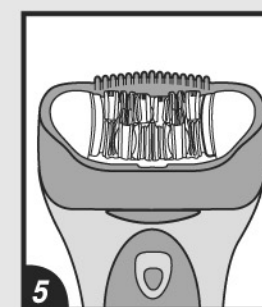
To operate your **Emjoi® Divine** for the first time, open the battery cover (fig.1) and insert 3 AAA alkaline batteries as indicated inside the battery compartment. With the batteries properly in position, replace the battery cover (fig.2).



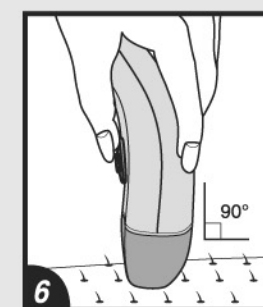
Remove the plastic protective cap.



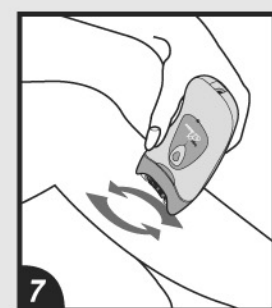
To turn On the unit, press the safety switch lock and at the same time slide it up to the desired speed. The unit has 2 speeds:  
0 Power "OFF"  
1 Low speed for fine hair  
2 High speed for coarse hair



The massaging fingers (on the disc cover) minimize pain during epilation.



Hold the unit in your palm, at a 90° angle, so the Emjoi® logo is facing you. Do not apply pressure; just glide the unit over the surface of the skin.



Use short, quick, brush like or sweeping motions in the direction of hair growth.



Take extra care to extend the leg before removing hair from behind the knee.



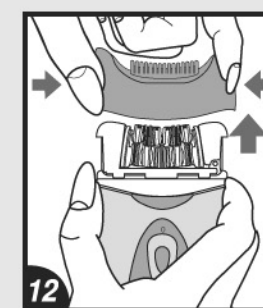
May be used for the bikini area (hold the skin taut with one hand).



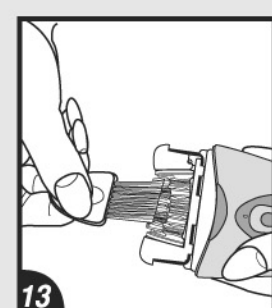
Can be used to remove individual hair from the upper lip and chin area.



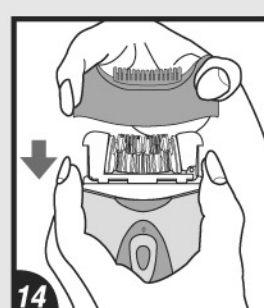
May be used to remove hair from underarms (extend your arm so skin is stretched taut).



To Clean: Turn the unit off. Remove the disc cover of the unit by squeezing both sides of the disc cover and pulling up.



Gently brush the tweezers to remove any hair.



Replace the disc cover.

**Warranty**

The **Emjoi® Divine** warranty against defects in material and workmanship lasts one year from the date of purchase.

**Keep original receipt for warranty service.**

During this warranty period, return the product to Emjoi, Inc. with proof of purchase to FDR Station, PO Box 7406, New York, NY 10150. Emjoi will take care of repair, or at their discretion, replacement of a defective unit without charge. For questions regarding this policy you may call toll free 1-888-99-EMJOI (1-888-993-6564).

**Important:** This warranty does not cover damages resulting from accidents, misuse, alterations, abuse, lack of reasonable care, or performance of services or repairs by an unauthorized service center. The manufacturers and distributors of the **Emjoi® Divine** do not assume responsibility for any damage caused by misuse or use other than that described in these instructions.

Model No. AP-17B  
US Patent No. 5,976,157  
Other Patents Pending  
© Soft Lines International Ltd. 2009

Emjoi®  
*Divine*



www.emjoi.com

PK-IB-EMJ-17B-01-0

**Battery Operated**

Emjoi®  
*Divine*

Before using your **Emjoi® Divine**, please read all these instructions carefully and completely.

The **Emjoi® Divine** is a terrific hair remover with 36 tweezer action discs to ensure rapid, non-irritating and virtually painless hair removal from the root. With its patented glide technology and massaging finger attachment removing hair has never been easier or more comfortable. The **Emjoi® Divine** removes hair as short as 0.5 mm from the upper lip, chin, legs, bikini line and underarms leaving skin silky smooth for up to 6 weeks. It features antimicrobial protection against damaging bacteria by Silver Ion Technology. The **Emjoi® Divine** is battery-operated and portable so you can use it anywhere.

When using an epilator for the first time we suggest that you test the unit on an area that has light hair growth in order to get accustomed to the epilation process.

**Caution**

Do not store or use your **Emjoi® Divine** where it can fall into a tub or sink of water. Do not reach for your unit if it has fallen into water.



**Instructions for use**

**For best results:** Take a warm bath or shower, to open up your pores, and use a loofa or exfoliation cream in small circles to exfoliate and remove dead skin from the area you wish to remove hair. Doing this before you use your **Emjoi® Divine** will cleanse and make your skin pliable, so removing hair will be less uncomfortable.

- Use your **Emjoi® Divine** in a location that has a comfortable temperature to avoid perspiration.
- Make sure that the areas you wish to remove hair from are clean, dry and free from moisturizing cream or oil.
- Open the battery cover, insert 3 AAA alkaline batteries as indicated inside the battery compartment, and then replace the battery cover.
- Remove the protective cap, by gently pulling, from your **Emjoi® Divine**.
- To turn on your unit, press the safety switch lock and at the same time slide it up to the desired speed. Low is recommended for fine hair and high is recommended for coarse hair.  
0 Power "OFF"  
1 Low speed  
2 High speed
- Hold the unit in your palm, at a 90° angle, so the Emjoi® logo is facing you.
- Position your **Emjoi® Divine** so that the discs are upright, the Emjoi® logo should be facing you.
- To minimize discomfort, hold the skin taut surrounding the area you are removing hair from.
- Gently glide the **Emjoi® Divine** in short, quick, brush like or sweeping strokes in the direction of hair growth.  
**Note:** For your protection, your **Emjoi® Divine** may slow down, or stop operating completely if it is pressed too hard against the skin.
- Before removing hair from the bikini line and underarms it is important to use a loofa or exfoliation cream in a warm shower or bath to remove dead skin and prevent ingrown hairs. If it has been an extended amount of time since you have removed hair from your bikini line and underarms, trim the hair with a scissor or trimmer. Make sure to hold your skin taut with one hand while removing hair.
- The **Emjoi® Divine** is only intended to remove single hairs from the upper lip and chin. Hold area taut and use a small brushing motion. **Do not use it like an electric shaver on your entire face!**
- Repeat within each area until all unwanted hair is removed. The time required to remove unwanted hair depends on the user's hair type.
- After each use clean your **Emjoi® Divine**.
- Keep the protective cap on your unit when it is not in use.

**Cleaning**

Regular cleaning and good maintenance ensures optimum results and will extend the lifetime of your **Emjoi® Divine**.

- Before cleaning, make sure to turn off your unit.
- Remove the disc cover by squeezing both sides of the disc cover and pulling up.
- Using the brush, enclosed, remove hair on all sides of the discs.
- Replace the disc cover by gently pressing until it clicks into place.
- Put the protective cap on to safeguard the tweezers.

**To Remove Residue:**

To remove residue from the tweezers, use rubbing alcohol on the tip of the tweezers with a cotton swab that has been squeezed dry.  
**Note:** Make sure that the cotton swab is not soaked with alcohol.

**Warning/Important**

- Before using your hair remover please read all these instructions carefully and completely.
- Use the **Emjoi® Divine** only for purposes described in this instruction book.
- Please keep these instructions for future reference.
- This appliance is not intended for use by persons (including children) with reduced physical, sensory or mental capabilities, or lack of experience and knowledge, unless they have been given supervision or instruction concerning use of the appliance by a person responsible for their safety.
- This unit is intended for one person. We discourage sharing the unit with others.
- Household use only.
- Keep the appliance dry.
- This unit is for dry use only.
- Do not place or store the unit in direct sunlight. Please store your unit in a cool dry place at a temperature between 0 - 40°C.
- Do not store your unit where it can fall into a tub or sink of water.
- Warning - Do not use your Emjoi® Divine while bathing or in the shower.** You **Emjoi® Divine** is not waterproof or water resistant and is not intended to be used near water, in the bathtub or in the shower.
- Do not place your unit in water or drop water into your unit.
- Do not reach for your unit if it has fallen into water.
- Always turn your unit "OFF" when it is not in use and before cleaning it.
- Do not use this unit if the epilation head is damaged as this could lead to injury.
- Never use your unit if it has been damaged or dropped into water.
- Do not use your unit if it has damaged or broken tweezer discs as injury may occur.
- Do not drop or insert anything into any openings of the unit.

- Do not use your unit outdoors.
- Do not use your unit where aerosol products or oxygen is being used.
- Children should be supervised to ensure that they do not play with this appliance.
- Keep your unit out of reach of children.
- This appliance is not to be used on, by or near children or invalids.
- Only use this unit on clean, dry, lotion free skin.
- Do not use water or any other liquid on the tweezers other than rubbing alcohol.
- To prevent accidents and injury to you or damage to the unit - when your Emjoi® Divine is in use, keep it away from the hair on your scalp, your eyebrows, eyelashes as well as clothes, brushes, wires, cords, shoelaces, etc.**
- Do not use the **Emjoi® Divine** if you have - allergic or sensitive skin that reacts to cosmetics, metals, clothing, etc., acne, body acne, warts, around moles and loose skin, diabetes, Raynaud's disease, eczema, psoriasis, hemophilia, immune deficiency, rosacea, couperose, varicose veins, wounds or when your skin has rashes or is sunburned, inflamed or irritated. Consult with your health care provider prior to use if you have any of the above conditions.
- Do not use the unit before or during menstruation, during pregnancy or for one month after giving birth unless you consult with your health care provider prior to use.
- Changes in your hormone levels (taking hormone medication, recently pregnant) can influence the color or thickness of hair growth. These changes are not caused by this product but hormonal changes.
- If you have any medical conditions, issues, questions or any sensitivity whatsoever we strongly advise you to consult with your health care provider before using this product.
- If you have a pacemaker consult with your health care provider prior to use.
- If you are epilating for the first time, we recommend doing it in the evening so any possible redness or irritation can go away overnight. We suggest testing the unit gradually over a period of two to three days to allow your skin to adjust.
- If you have never epilated before (or if it has been an extended time since you epilated) you will feel a prickling sensation when using the unit. This feeling is due to the fact that you are removing hair from the root. After a few sessions the sensation you feel should diminish.
- Removing hair from the root can cause ingrown hair and skin irritation (redness of the skin, discomfort, itching). If you know that you are prone to ingrown hair, removing hair from the root may not be for you. Regular skin massaging with a massaging glove or loofa, may help reduce the chance or occurrence of ingrown hairs. After using the epilator you can use body cream or aloe vera to sooth the skin and any possible irritation.
- Using an epilator may cause redness or irritation of the skin. This is a normal reaction that will quickly disappear, but may be longer if you have very sensitive skin or are removing hair from the root for the first few times. If any irritation remains for more than 3 days, discontinue use and consult with your health care provider.
- Sometimes inflammation of the skin can occur when bacteria penetrates the skin. Cleaning the epilation head before and after each use can minimize the risk of infection.

- The **Emjoi® Divine** is only intended to remove single hairs from the upper lip and chin. Hold area taut and use a small brushing motion. **The Emjoi® Divine is NOT an electric shaver and should NOT be used like an electric shaver on your entire face!** Using the **Emjoi® Divine** like an electric shaver, without holding the skin taut, could potentially allow the **Emjoi® Divine** to pinch or grab the skin, which could cause irritation and skin damage.
- Before removing hair from the bikini line and underarms it is important to use a loofa sponge of exfoliation cream in a warm shower or bath to remove dead skin and help minimize the chance or occurrence of ingrown hairs. If it has been an extended amount of time since you have removed hair from your bikini line or underarms (if the hair is longer than 5 mm), trim the hair with a scissor or trimmer. Make sure to hold the skin taut with one hand while removing hair. Some women may experience irritation after removing hair from the underarms and bikini line for the first time. We suggest testing the unit on a small part of the skin in these areas first.
- Do not continually rub the unit on the same area or apply strong pressure.
- Keep the protective cap on your unit when it is not in use.

**Frequently asked questions**

- Q: Does the **Emjoi® Divine** hurt?  
A: The first time you use the **Emjoi® Divine** you might feel a prickling sensation, this feeling is due to the fact that you are removing hair from the root. After several uses, the tweezing becomes more comfortable even for those with sensitive skin.
- Q: How should I hold the **Emjoi® Divine**?  
A: To minimize discomfort, hold the skin surrounding the area you are removing hair from taut. Gently glide, do not apply pressure, the **Emjoi® Divine** in short, quick, brush like or sweeping strokes in the direction of hair growth.  
**Note:** For your protection, your **Emjoi® Divine** may slow down, or stop operating completely if it is pressed too hard against the skin.
- Q: Can I use the **Emjoi® Divine** on my upper lip?  
A: Yes, the **Emjoi® Divine** is perfect for removing individual hairs from the upper lip.  
**Important:** Hold your upper lip taut and use short brushing strokes to remove individual hairs from your upper lip.
- Q: Can I use the **Emjoi® Divine** anywhere on my face?  
A: No. The **Emjoi® Divine** is only intended to remove individual hairs from the upper lip and chin area. When removing hair from your upper lip and chin, hold your skin taut and use short brushing motions. **Do not use Emjoi® Divine like you would for an electric shaver on your entire face.**
- Q: Can I use the **Emjoi® Divine** on my bikini line and underarm?  
A: Yes. Before removing hair from the bikini line or underarms it is important to use a loofa sponge in a warm shower or bath to remove dead skin and prevent ingrown hairs. Since these areas can be sensitive, it is important to hold the skin taut.
- Q: Will my hair grow back as fast as it does when I shave?  
A: No. With shaving you are cutting the hair at the surface, so hair grows back quickly. When you use the **Emjoi® Divine** it removes hair from the root so it takes longer, up to 4-6 week, to grow back.

- Q: What if my skin becomes red after using the **Emjoi® Divine**?  
A: Whenever you remove hair from the root your skin may become red or irritated. To sooth irritation you can use lotion with aloe vera or antibiotic ointment.
- Q: What can I do for ingrown hairs?  
A: We recommend using a loofa or an exfoliation cream in the shower or bath to soften the skin and any ingrown hairs, enabling the **Emjoi® Divine** to remove the hair from the root. If any irritation remains for more than 3 days, discontinue use and consult with your health care provider.
- Q: Why is the **Emjoi® Divine** curved?  
A: Because your body is curved. The epilation head is curved to gently and effectively glide along the contours of your body.
- Q: Do I have to clean the **Emjoi® Divine**?  
A: Yes. We recommend that you clean your unit after each use. Before cleaning make sure to turn off your unit. Remove the disc cover of the unit by squeezing both sides of the disc cover. Using the brush, enclosed, remove hair on all sides of the discs. Replace the disc cover by gently pressing until it clicks into place.
- Q: Should I let someone else use my **Emjoi® Divine**?  
A: No. For sanitary reasons, the **Emjoi® Divine** is only recommended to be used by one person.